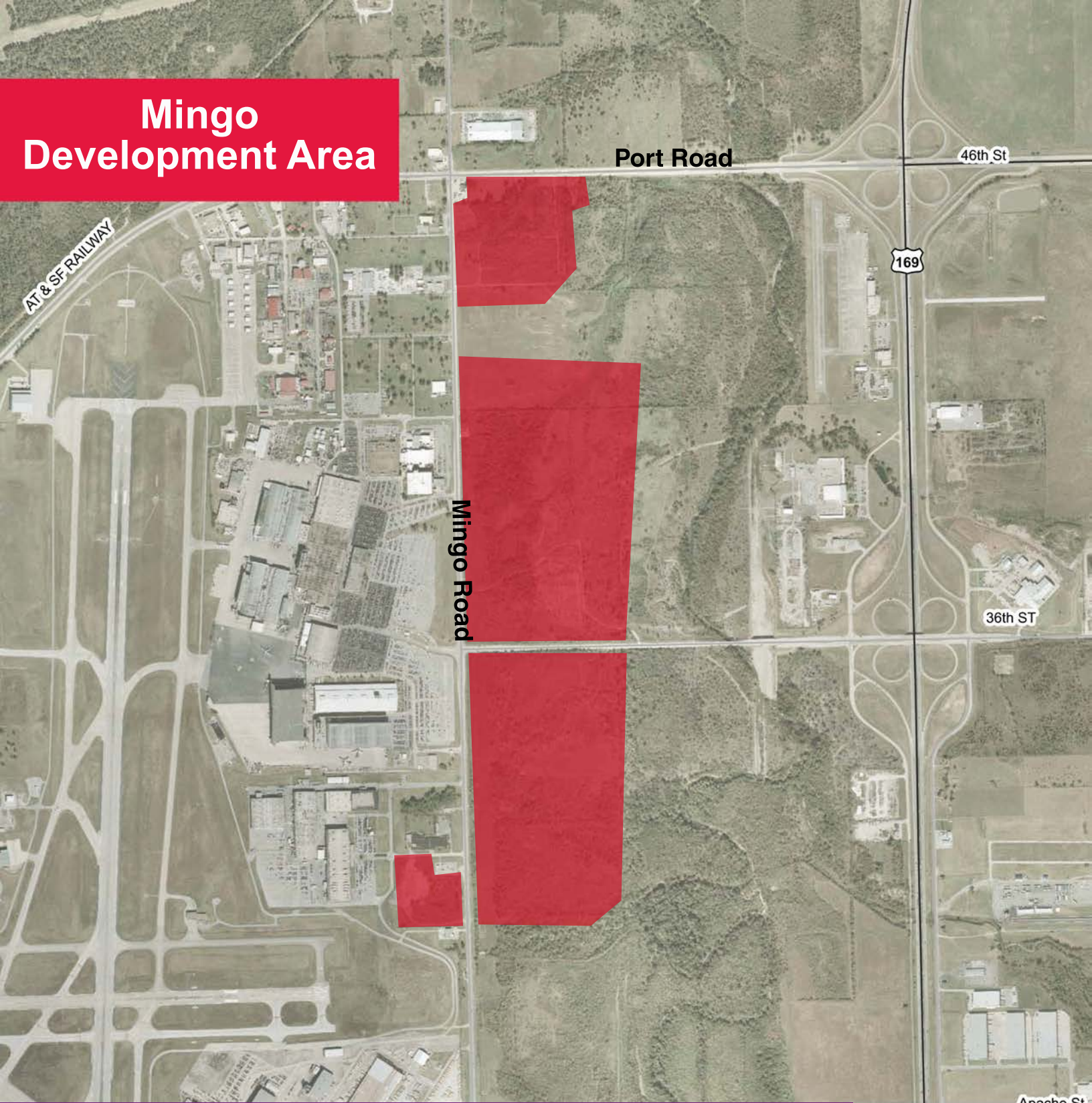


Mingo Development Area



The Mingo Development Area encompasses 136 acres along the eastern edge of Tulsa International Airport. The site's location, adjacent to Mingo Road and 36th Street North, just west of U.S. Highway 169, and five miles west of the Port of Catoosa, provides excellent multi-modal transportation access. The site has been identified in an overall development plan as suitable for industrial, warehouse, or office use.

Features:

- Convenient access to all major interstates: I-244, I-44, US169, H75
- Zoned Industrial
- Immediately adjacent to American Airlines, Spirit AeroSystems, and the IC Bus Plant
- Federal Express, DHL, UPS, and USPS operations located on airport complex
- Flexible sites with access to all major utilities

For more information, contact:

Mark VanLoh

CEO, Tulsa Airports

T | 918.838.5000

MarkVanLoh@tulsaairports.com

www.flytulsa.com

